

CT-5071T / CT-5071TE

ADSL2+ Ethernet Router



COMTREND
Leading the Communication Trend



Description

CT-5071T / CT-5071TE with TR-069 compliant are a series of high performance ADSL2+ Ethernet Routers, providing one 10/100 Ethernet, and one ADSL line to access the Internet.

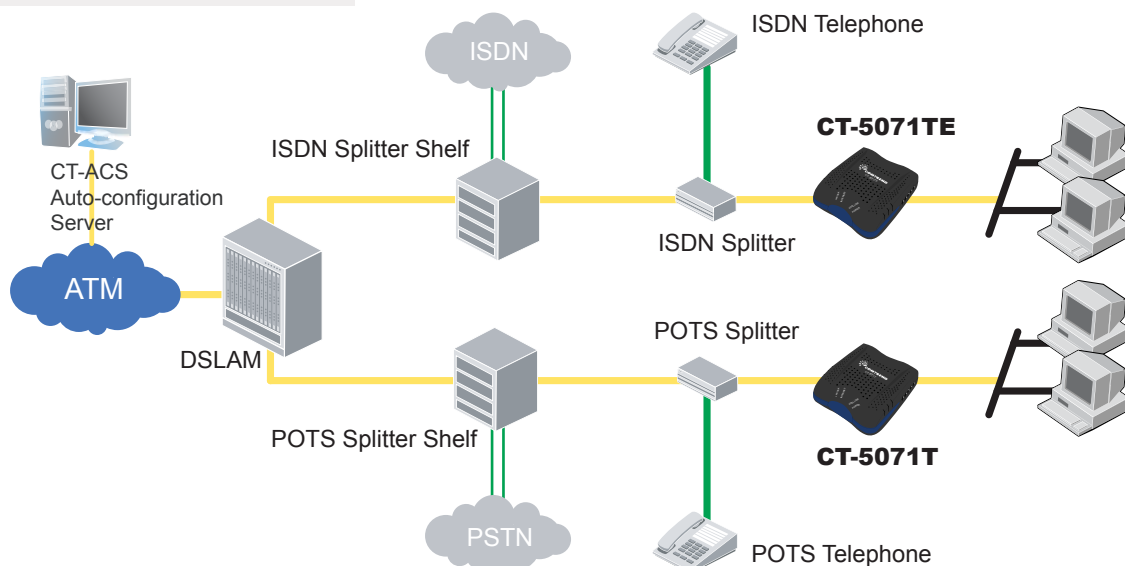
Comtrend's CT-5071T series also provide with TR-068 compliant panel and LED indicators making them more user friendly. It incorporates LAN or Video on Demand over one ordinary telephone line at speeds of up to 24 Mbps. The CT-5071T is for ADSL over POTS (Annex A), while the CT-5071TE is for ADSL over ISDN (Annex B). It has full routing capabilities to segment / route IP protocol and is able to support advanced security functions.

The CT-5071T series can operate in either routing or bridging mode and also facilitate remote network management from home. In addition, it can protect all the networked computers with advanced security technologies, such as VPNs (Virtual Private Networks) with PPTP pass-through, L2TP pass-through, IPSec pass-through and firewall.

Features

- CT-5071T (Annex A)
- CT-5071TE (Annex B)
- IP filtering
- SPI (Stateful Packet Inspection)
- DoS protection
- Static route/RIP/RIP v2 routing functions
- Dynamic IP assignment
- NAT/PAT
- IGMP proxy
- DHCP server/relay/client
- DNS proxy
- Auto PVC configuration
- Up to 8 VCs
- Web-based management
- Supports remote administration, automatic firmware upgrade and configuration
- Configuration backup and restoration
- FTP/TFTP server
- Embedded SNMP agent
- IP/MAC address filtering
- Supports TR-069/TR-098/TR-111 for remote management
- TR-068 compliant

Applications Diagram



CT-5071T / CT-5071TE

ADSL2+ Ethernet Router



Specifications

Hardware Interface

RJ-11 X 1 for ADSL, RJ-45 X 1 for LAN, Reset Button X 1, Power switch X 1

WAN Interface

ADSL standard	ITU-T G.992.5, ITU-T G.992.3, ITU-T G.992.1, ANSI T1.413 Issue 2	
G.992.5 (ADSL2+)	Downstream : 24 Mbps	Upstream : 1.3 Mbps
G.992.3 (ADSL2)	Downstream : 12 Mbps	Upstream : 1.3 Mbps
G.DMT	Downstream : 8 Mbps	Upstream : 832 Kbps
Annex M		

LAN Interface

Standard	IEEE 802.3, IEEE 802.3u
10/100 BaseT	Auto-sense
MDI/MDX support	Yes

ATM Attributes

RFC 2364 (PPPoA), RFC 2684 (RFC 1483) Bridge/Route; RFC 2516 (PPPoE); RFC 1577 (IPoA); Annex M

Support PVCs	8
AAL type	AAL5
ATM service class	UBR/CBR/VBR
ATM UNI support	UNI3.1/4.0
OAM F4/F5	Yes

Management

SNMP, Telnet, Web-based management, Configuration backup and restoration
Software upgrade via HTTP, TFTP server, or FTP server
Supports TR-069/TR-098/TR-111 for Remote Management

Bridge Functions

Transparent bridging and learning	IEEE 802.1d
VLAN support	Yes
Spanning tree algorithm	Yes
IGMP proxy	Yes

Routing Functions

Static route, RIP, and RIPv2, NAT/PAT, DHCP Server/DHCP Relay/DHCP Client, DNS Proxy, ARP

Security Functions

Authentication protocols	PAP, CHAP, TCP/IP/Port filtering rules, Port triggering/Forwarding, Packet and MAC address filtering, Access control
--------------------------	--

QoS

L3 policy-based QoS, IP QoS, ToS

Application Passthrough

PPTP, L2TP, IPSec, VoIP, Yahoo messenger, ICQ, Real Player, NetMeeting, MSN, X-box, etc.

Power Supply

External power adapter	100 - 220 Vac
------------------------	---------------

Environment Condition

Operating temperature	0 ~ 50 degrees Celsius
Relative humidity	5 ~ 95% (non-condensing)

Dimensions

92 mm (W) x 34 mm (H) x 114 mm (D)

Kit weight (1* CT-5071T/CT-5071TE, 1*RJ11 cable, 1*USB cable, 1*RJ45 cable, 1*power adapter, 1*CD-ROM)

0.65 KG

Note: Specifications are subject to change without notice.

Taiwan:
3F-1, No.10, Lane 609, Chung Hsin Road
Section 5, San Chung, Taipei, Taiwan 24159
Tel: 886-2-2999-8261
Fax: 886-2-2999-8497

China:
Room 102, No.8, LiJing Garden, Yushan Town,
Kunshan City, Jiangsu Province, China
Tel: 86-512-57383156, 86-512-57383157,
86-512-57384515
Fax: 86-512-57383155

Spain:
Edif. América II C/Proción, 7 portal 3 bajo H 28023 Madrid,
Spain
Tel: 34-917990403
Fax: 34-913510999

France:
87, Rue du Gouverneur Général Félix Eboué 92130
Issy-les-Moulineaux, France
Tel: 33-1-70715700
Fax: 33-1-70715701

Czech Republic:
TOKOVO, Jankovcova 1518/2, 170 00 Prague 7, Czech Republic
Tel: 420-266-782040
Fax: 420-266-782990

USA:
15375 Barranca Parkway, Suite C-104 Irvine,
CA 92618, USA
Tel: 1-949-7539640
Fax: 1-949-7539020

Canada:
300-1275 West 6th Ave. Vancouver, BC V6H
1A6, Canada
Tel: 1-949-7539640
Fax: 1-949-7539020

Brazil:
Rua Vergueiro, 2087 cj. 101, 04101-000 Sao
Paulo, SP - Brazil
Tel: 55-11-50878831



COMTREND CORPORATION

Global contact: sales@comtrend.com
Website: www.comtrend.com



DS_CT5071T/CT5071TE_R1.2_110107