

CT-6381E

ADSL2+ VoIP WLAN IAD



Description

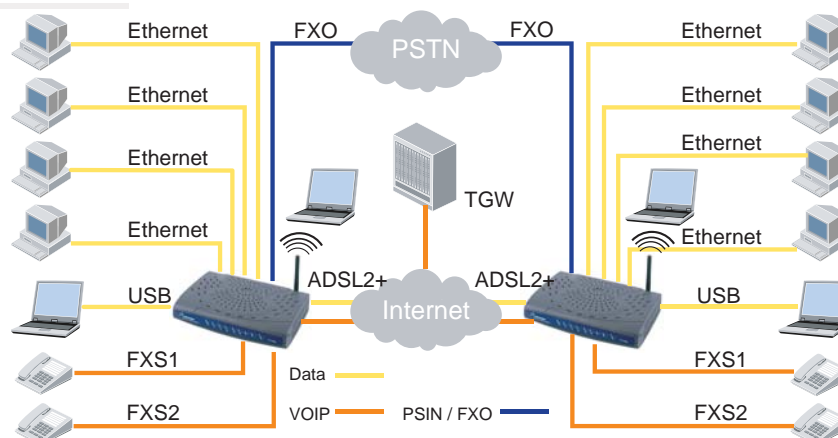
Comtrend's CT-6381E is a powerful WLAN VoIP Integrated Access Device (IAD), providing predictable, real-time, toll-quality voice over the Internet. The CT-6381E is for ADSL2/2+ over ISDN (Annex B). It is designed for residential and business users who need to integrate ADSL2/2+, WLAN and VoIP technologies. With ADSL2/2+ broadband technology, the CT-6381E offers users easy access to the Internet via WLAN or Ethernet, and provides VoIP via standard analog phones.

The CT-6381E allows calls to be routed to anywhere in the world – significantly reducing or eliminating long distance charges. You can even make phone calls when your PC is turned off. The CT-6381E supports policy based QoS on layer 3, which provides high quality voice service. It also provides a solution for all your network and telephony needs in one integrated unit, which reduces space requirements, and the cost of hardware and cabling. This makes CT-6381E the most cost effective solution for your application.

Features

- ADSL2/2+ VoIP and Router Integrated
- Integrated 802.11g AP (backward compatible with 802.11b)
- Supports life line: PSTN alive when power off
- Supports fast emergency call
- Supports Quality of Service (QoS) for voice
- Supports caller ID presentation and restriction
- Supports Direct number dialing
- Remote administration and automatic remote firmware upgrade and configuration
- Supports call hold
- Supports call waiting
- Supports call forwarding
- Supports call transfer
- Supports 3-way conference
- Supports VPN Pass-Through
- Supports Day-time parental control

Applications Diagram



CT-6381E

ADSL2+ VoIP WLAN IAD

Specifications

WAN Interface

ADSL Standard
ITU-T G.992.5, ITU-T G.992.3, ITU-T G.992.1, ITU-T G.992.2, ANSI T1.413 Issue 2
G.992.3(ADSL2) Downstream: Up to 12 Mbps Upstream: 1.3 Mbps
G.992.5(ADSL2+) Downstream: Up to 24 Mbps Upstream: 1.3 Mbps

LAN Interface

Ethernet x 4

WLAN

Standard IEEE802.11g, backward compatible with 802.11b
Encryption 64, 128-bit Wired Equivalent Privacy (WEP) Data Encryption
Channels 11 Channels (US, Canada)/ 13 Channels (Europe)/ 14 Channels (Japan)
Data Rate Up to 54Mbps
MAC Address Filtering, WEP, WPA, IEEE 802.1x
10, 25, 50, 100mW @ 22MHz channel bandwidth Output power level can select according to the environment

Analog Interface

FXS x 2, FXO x 1

ATM Attributes

RFC 2364, RFC 2684 (RFC 1483) Bridge; RFC 2684 (RFC 1483) Route; RFC 2516; RFC 1577
VCs 8
AAL type AAL5
ATM service class UBR/CBR/VBR
ATM UNI support UNI3.1/4.0
OAM F4/F5 Yes

Management

SNMP, SNMP, ILMI 4.0, Telnet, Web-based management, Configuration backup and restoration
Software upgrade via HTTP, TFTP client and server, or FTP server

Bridge Functions

Transparent bridging and learning IEEE 802.1d
IGMP Proxy Yes
IGMP Snooping Yes

Routing Functions

Static route, RIP, and RIP v1,v2, NAT/PAT, DHCP Client/Server/Relay, DNS, ARP

Security Functions

Authentication protocols PAP, CHAP
VPN PPTP/L2TP/IpSec pass-through
Stateful Packet Inspection, Packet filtering, Denial Of Service protection, Traffic Conditioning, WFQ-based
Bandwidth
Management, HTTP proxy

QoS

L3 policy-based QoS, IP QoS, ToS

Voice Functions

SIP RFC 3261
MGCP RFC 3435
Codec G.711, G.723.1, G.729ab
RTP RFC 1889
SDP RFC 2327
Caller ID ETSI based
Life line/Emergency call Yes
Echo cancellation G.168
Silence suppression Yes

Power

External power adapter 100-240Vac to 18Vdc /1.5A

Environmental Conditions

Operating temperature 0 ~ 50 degrees Celsius
Relative humidity 5 ~ 90% (non-condensing)

Dimensions

205 mm (W) x 47 mm (H) x 145 mm (D)

Specifications are subject to change without notice.

Taiwan:
3F-1, No.10, Lane 609, Chung Hsin Road
Section 5, San Chung, Taipei, Taiwan 24159
Tel: 886-2-2999-8261
Fax: 886-2-2999-8497

China:
102Room, 44Building, Yuecheng Garden,
Yushan Town, Kunshan City, Jiangsu Province,
China
Tel: 86-512-57383156, 86-512-57383157,
86-512-57384515
Fax: 86-512-57383155

Spain:
Edif. América II C/Proción,7 portal 3 bajo H 28023 Madrid,
Spain
Tel: 34-917990403
Fax: 34-913510999

France:
87, Rue du Gouverneur Général Félix Eboué 92130
Issy-les-Moulineaux, France
Tel: 33-1-70715700

USA:
15375 Barranca Parkway, Suite C-104 Irvine,
CA 92618, USA
Tel: 1-949-7539640
Fax: 1-949-7539020

Canada:
300-1275 West 6th Ave. Vancouver, BC V6H
1A6, Canada
Tel: 1-949-7539640
Fax: 1-949-7539020

Brazil:
Rua Vergueiro, 2087 cj. 101, 04101-000 Sao
Paulo, SP - Brazil
Tel: 55-11-50878831



COMTREND CORPORATION

Global contact: sales@comtrend.com

Website: www.comtrend.com



DS_CT6381E_R1.0_082906