

# CT-6382T/CT-6382TE

## ADSL2/2+ WLAN VoIP IAD



**COMTREND**  
Leading the Communication Trend



### Description

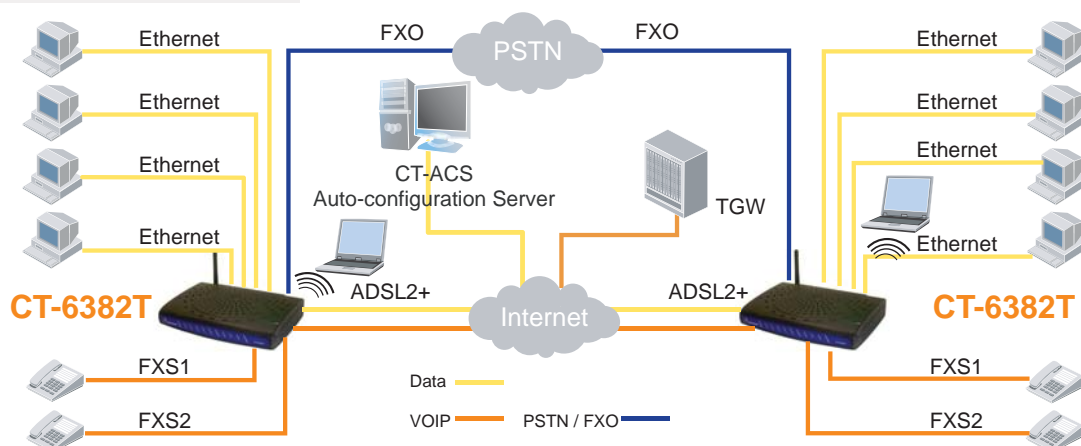
Comtrend's CT-6382T/CT-6382TE is a powerful WLAN VoIP IAD (Integrated Access Device), providing predictable, real-time, toll-quality voice over the Internet. Developed with ADSL2/2+ broadband technology over PSTN, the CT-6382T/CT-6382TE offers residential and business users easy access to the Internet via WLAN or Ethernet, also providing VoIP via standard analog telephones.

The CT-6382T/CT-6382TE allows calls to be routed to anywhere in the world – significantly reducing or eliminating long distance charges. You can even make phone calls when your PC is turned off. The CT-6382T/CT-6382TE supports policy based QoS on layer 3, which provides high quality voice service. It also provides a cost-effective solution to combine with all your network and telephony needs in one, which reduces space requirements and the cost of hardware and cabling. The CT-6382T/CT-6382TE is also designed with TR-068 compliant color panel and LED indicators making it more user friendly.

### Features

- CT-6382T-Annex A
- CT-6382TE-Annex B
- ADSL2/2+ VoIP and Router integrated
- Integrated 802.11g AP, backward compatible with 802.11b
- Supports life line: PSTN alive when power off
- Supports emergency call
- Supports QoS (Quality of Service) for voice
- Supports caller ID display and restriction
- Supports call hold
- Supports call waiting
- Supports call forwarding
- Supports call transfer
- Supports 3-way conference
- Supports direct number dialing
- Supports remote administration, automatic firmware upgrade and configuration
- Supports VPN Pass-through
- Supports Day-time parental control
- Supports TR-069
- Supports TR-068
- Supports T.38

### Applications Diagram



# CT-6382T/CT-6382TE

## ADSL2/2+ WLAN VoIP IAD



### Specifications

#### WAN Interface

ADSL Standard	ITU-T G.992.5, ITU-T G.992.3, ITU-T G.992.1, ITU-T G.992.2, ANSI T1.413 Issue 2	Downstream: Up to 12 Mbps	Upstream: 1.3 Mbps
G.992.3 (ADSL2)		Downstream: Up to 24 Mbps	Upstream: 1.3 Mbps
G.992.5 (ADSL2+)			
AnnexM			

#### LAN Interface

Ethernet x 4

#### Optional USB Interface

USB2.0 host

#### WLAN

Standard	IEEE802.11g, Backward compatible with 802.11b
Encryption	64, 128-bit Wired Equivalent Privacy (WEP) Data Encryption
Channels	11 Channels (US, Canada)/ 13 Channels (Europe)/ 14 Channels (Japan)
Data rate	Up to 54Mbps
MAC address filtering, WEP, WPA, IEEE 802.1x	
10, 25, 50, 100mW @ 22MHz channel bandwidth output power level can be selected according to the environment	

#### Analog Interfaces

FXS x 2, FXO x 1

#### ATM Attributes

RFC 2364, RFC 2684 (RFC 1483) Bridge; RFC 2684 (RFC 1483) Route; RFC 2516; RFC 1577	
VCs	8
AAL type	AAL5
ATM service class	UBR/CBR/VBR
ATM UNI support	UNI3.1/4.0
OAM F4/F5	Yes

#### Management

TR-069, SNMP, ILMI 4.0, Telnet, Web-based management, Configuration backup and restoration  
Software upgrade via HTTP, TFTP client and server, or FTP server

#### Bridge Functions

Transparent bridging and learning	IEEE 802.1d
IGMP proxy	Yes
IGMP snooping	Yes

#### Routing Functions

Static route, RIP, and RIP v1, v2, NAT/PAT, DHCP Client/Server/Relay, DNS, ARP

#### Security Functions

Authentication protocols	PAP, CHAP
VPN	PPTP/L2TP/IpSec pass-through
Stateful packet inspection, Packet filtering, Denial of service protection, Traffic conditioning, WFQ-based bandwidth Management, HTTP proxy	

#### QoS

L3 policy-based QoS, IP QoS, ToS

#### Voice Functions

SIP	RFC 3261
MGCP (optional)	RFC 3435
Codec	G.711, G.723.1, G.729ab
RTP	RFC 1889
SDP	RFC 2327
Caller ID	ETSI based
Life line/Emergency call	Yes
Echo cancellation	G.168
Silence suppression	Yes

#### Power

External power adapter Input: AC100-240V, Output: DC15V / 1.6A

#### Environmental Conditions

Operating temperature	0 ~ 50 degrees Celsius
Relative humidity	5 ~ 95% (non-condensing)

#### Dimensions

205 mm (W) x 47 mm (H) x 145 mm (D)

#### Kit Weight (1\*CT-6382T/CT-6382TE, 1\*RJ45 cable, 2\*RJ11 cable, 1\*power adapter)

0.96 KG

Specifications are subject to change without notice.

Taiwan:  
3F-1, No.10, Lane 609, Chung Hsin Road  
Section 5, San Chung, Taipei, Taiwan 24159  
Tel: 886-2-2999-8261  
Fax: 886-2-2999-8497

China:  
Room 102, No.8, LiJing Garden, Yushan Town,  
Kunshan City, Jiangsu Province, China  
Tel: 86-512-57383156, 86-512-57383157,  
86-512-57384515  
Fax: 86-512-57383155

Spain:  
Edif. América II C/Proción, 7 portal 3 bajo H 28023 Madrid,  
Spain  
Tel: 34-917990403  
Fax: 34-913510999

France:  
87, Rue du Gouverneur Général Félix Eboué 92130  
Issy-les-Moulineaux, France  
Tel: 33-1-70715700  
Fax: 33-1-70715701

Czech Republic:  
TOKOVO Jankovcova 1518/2 170 00, Prague 7, Czech Republic  
Tel: 420-266-782040, 420-266-782041, 420-266-782042  
Fax: 420-266-782990

USA:  
15375 Barranca Parkway, Suite C-104 Irvine,  
CA 92618, USA  
Tel: 1-949-7539640  
Fax: 1-949-7539020

Canada:  
300-1275 West 6th Ave. Vancouver, BC V6H  
1A6, Canada  
Tel: 1-949-7539640  
Fax: 1-949-7539020

Brazil:  
Rua Vergueiro, 2087 cj. 101, 04101-000 Sao  
Paulo, SP - Brazil  
Tel: 55-11-50878831



**COMTREND CORPORATION**  
Global contact: sales@comtrend.com  
Website: www.comtrend.com



DS\_CT6382T/CT6382TE\_R1.0\_052407